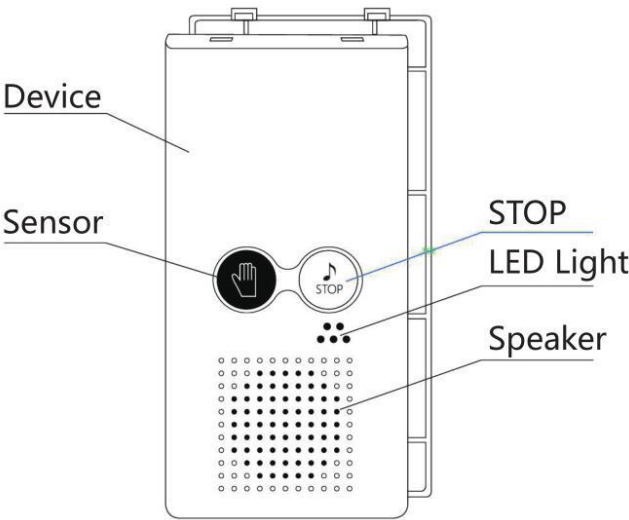


USER MANUAL

- 1. Please read this instruction carefully before using the device.
- 2. Please keep the manual and warranty card, and the batteries are not included.

Parts & Accessories



Precautions For Use

Please read the manual carefully before use and avoid any loss or damage to your personal life and property.

Warning

- 1. Do not use it in the place with too much dust, intensive vibration, and also avoid using in machinery and furniture.
- 2. Do not use it in place with causticity gas, flammability gas. (It may cause a fire and battery leakage, which could lead to serious injury).

Warning	
Do not	Do not use in bathroom, outdoors or places with water or damp.
	Do not disassemble this product without authorization.
	Do not seize the product as a handrail when you stand up (This may cause damage to the product and hurt you).
	Do not water the product.
	Do not hit the product.
Musts	Please install by using the screws in the attachment.
	Clean the wall before install (use double-sided tapes.)
	After installation, confirm the firmness of the product after installation.
	Use the batteries informed in the manual.
	Check the device regularly.

Accessories

- User's Manual*1
- Double-sided tape*4
- Operational Paster*1
- Mounting screws*2
- Plastic parts*2

Usage

Start to use

Adjust the sensible range between 5-25cm before use. Use your hand to set the distance.

Prolong sound

Put your hands in front of the sensor window within the scope of 50 mm after the end of the sound to extend the playing time.

Switch sound

Hold STOP button for 2 seconds and there will be prompt tone. Click STOP button again to switch between the 4 different sounds. Stay on the sound you want for more than 5 seconds to save and set as default.

Pause

Press STOP button to stop the sound.

Sleep mode

Hold STOP button for 5 seconds and there will be prompt tone and goes into Sleep mode. Click again to wake up. After wake up successfully, all of the 5 LED lights will flash once simultaneously.

LED reminder

The 5 LED lights will go out one by one every 7 seconds. You can see the left time by the remaining LED lights that is on.

Sensible Range

Remove the back panel, and then you will see the distance knob inside the device, adjust the volume you need with a small screwdriver or your hand according to the decrease or increase direction.

Sensible Range : 5-25cm

Installation

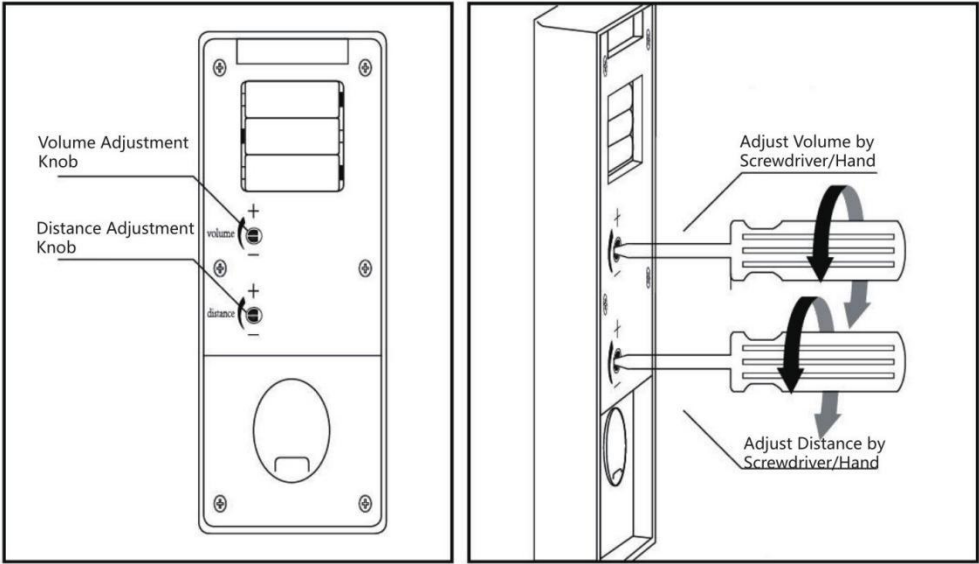
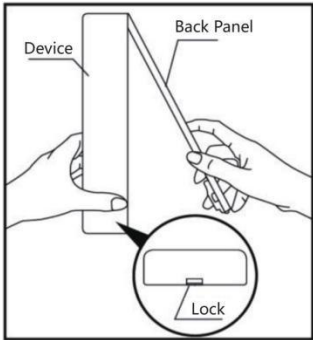
When installing to a thin surface, the device should be fixed on plywood for more than 12mm thick or fortified wood more than 30mm thick. Note: Do not seal the lockhole or you will not be able to change the battery. Please make sure there is no interference around.

Maintenance

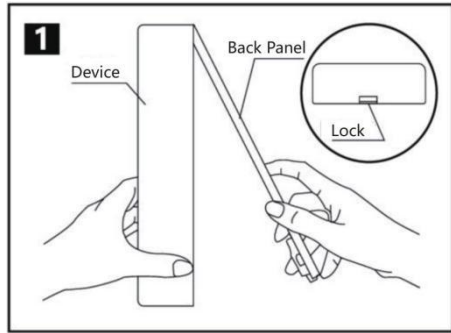
- Battery: three AA batteries of 1.5V
 - Usage: about 4000 times. (alkaline dry batteries)
 - The use of the batteries may have differences depending on its manufacturer. The wrong use of battery may cause damage to leakage or break the equipment.
- Pay attention to the follow instructions below:**
- Please ensure the battery are placed into the box according to the positive and negative terminals of the battery.
 - Do not use new batteries with the old ones.
 - Do not mix up different types of batteries(such as manganese dry batteries, alkaline dry batteries)and different brands of batteries.
 - Please take out the batteries it has not been used for a long time.
 - Do not wet the speaker with water, even though it has tarps. Do not contact with detergent toilet, antifogging agent, fluorine detergents contains strong acids, strong alkali corrosive gas, liquid and solid, which could cause damage to the device.

Volume Adjustment

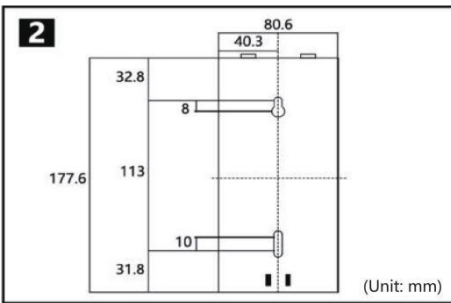
Remove the back panel, and then you will see the volume knob inside the device, adjust the volume you need with a small screwdriver or your hand according to the volume direction.



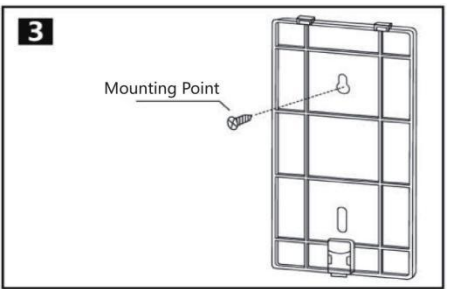
Installation Instructions



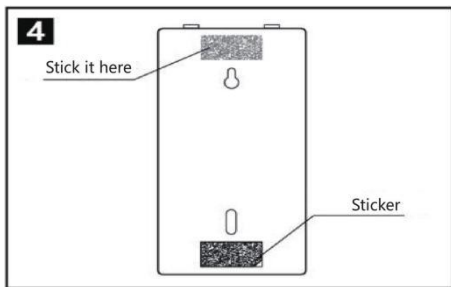
Press the button on the lower side of the back panel. Hold the back panel with one hand, then take it away from the device.



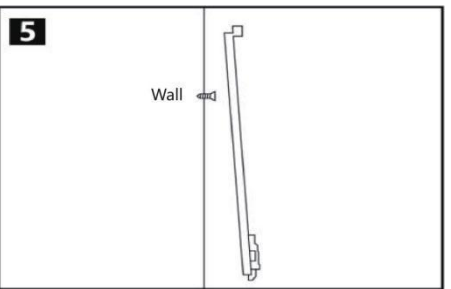
The location for the back panel (for your reference)



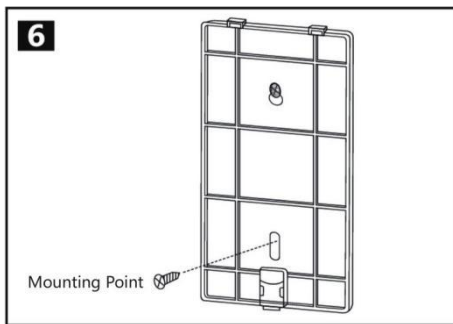
The central part of the hole is where you place the screw. Screw down with the screwdriver.



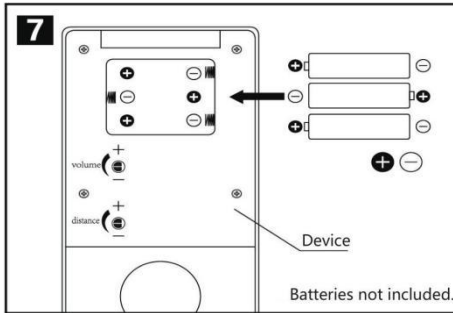
Before you install the back panel onto the wall, please paste the double-sided tape on its back.



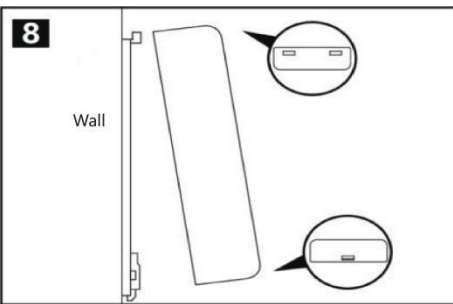
The tape is for fixation temporarily and you can choose to use screws only. If you have use the tapes, you should also use screws to fix it from falling off.



The central part of the hole is where you place the screw. Screw down with the screwdriver.



Insert the three batteries as the way shown as figure.



The grapnel on the back panel will buckle the hole of the main part. Press the main part towards the back panel to lock.



Paste the adhesive sticker near the device, as shown in figure.

Note: Although this product has water-proof fabric inside, do not splash water on it or use toilet detergent, mildew preventive containing chloride. Put it away from strong acid and strong corrosive gas, liquid, solid etc. to avoid any damage to the device.

Specifications

Dimension	182(H)x85(W)x30(L)mm
Weight	210g
Shell Material	ABS Resin
Sound	Running-water, Birdcall and tinkling brook, Water-flushing, Light-music
Volume	40dB —130dB
Sensible Range	Within 5-25cm
Playing time	About 35s per use
Battery Life	About 4000 times (Alkaline battery)
Battery	Three 1.5v AA batteries(not included)

Attention:

1. Do not use when the ambient temperature is lower than 10℃.
2. Do not hit or force the sensor window or the STOP button.
3. Do not stick objects such as gum on the sensor window.
4. It may fall off naturally during the use and operation and thus lead to loss of property and damage. Please ensure to install the device as the instruction.
5. Do not use it as handrail when you stand up.(This may lead to product damage or personal injury).
6. Paste the instruction manual near the device.
7. Do not disassemble, repair or refit the product by yourself.
8. This product should be disposed as recyclable electronic waste. Thank you for your cooperation.

Troubleshooting

Situations	Problems	Solutions
Low volume	Volume not set	Increase the volume
	Battery low	Replace the battery
Low or bad sound quality	Battery low	Replace the battery
Noises		
No sound	Battery low	Replace the battery
	The “+ ” and “-” pole are in the opposite location	Check the battery, and place the battery in a right way.
	The device is in Sleep Mode	Click STOP button to wake up the device
	Out of the Sensible Distance	Get closer to the device
Sound keeps playing	Objects or dirt on or near the sensor window	Remove the objects or dirt
	1. Objects (stainless steel, reflector etc.) near the sensor window 2. Place in the outdoor	Remove the obstacles and place it indoors.